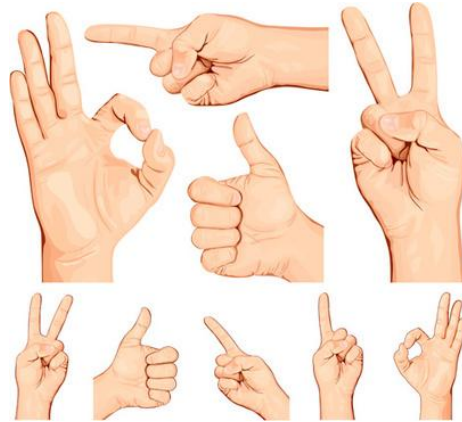


Design an artificial neural network (Multilayer Perceptron) to identify hand gestures. Sample gesture images have been shown below.



Include at least 10 gestures, and train your network with data from a standard data set (you may find free data sets from the web). Test your network and discuss its performance.

---

A deep neural network is to be designed for recognizing hand-written digits. Design your network choosing its type, number of layers, etc. Use MNIST data set to train and test your network. Discuss its performance.

---

In this project we want to see if it is possible to start with a network with large number of neurons and layers, and then prune it to a smaller network. Assume a data set where each pattern includes 25 data items. Design a network with 25-100-100-50-10 neurons. Consider a threshold for classifying a weighted input as significant. Discuss how we can reduce the size (width, depth) of the network.